

ESPRESSO and MOCA INSTALLATION and UPDATE INSTRUCTIONS

TABLE OF CONTENTS	Page
1 - FW UPDATE	1
2 - DELETING THE OLD PRINTERS	3
3 - UNINSTALL THE OLD DRIVER	3
4 - NEW DRIVER INSTALLATION: USB connection	4
5 - NEW DRIVER INSTALLATION: LAN connection	6
6 – ADD PRINTER WIZARD	7

WARNING !!

if you have already installed on your PC the Espresso/Moca driver, you **MUST** verify the FW release of your printer and, **if it is 1.01.22 or previous**, it's **MANDATORY** to **UPDATE** it to the last version before installing the new driver that's not compatible with the previous versions.

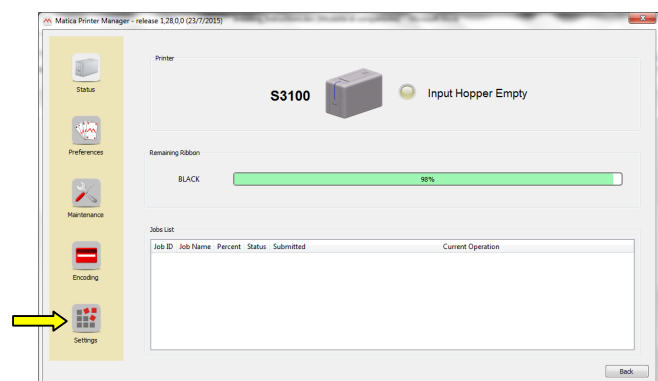
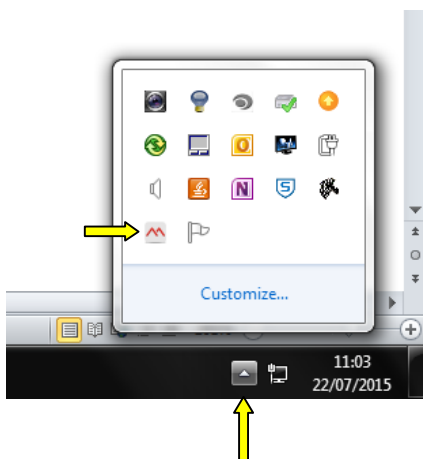
1 – FW UPDATE

Unzip the .zip file you received and save the NEW updated version of FW in a folder on your PC.

Connect the printer via USB to the PC where the printer was already installed

Power it On

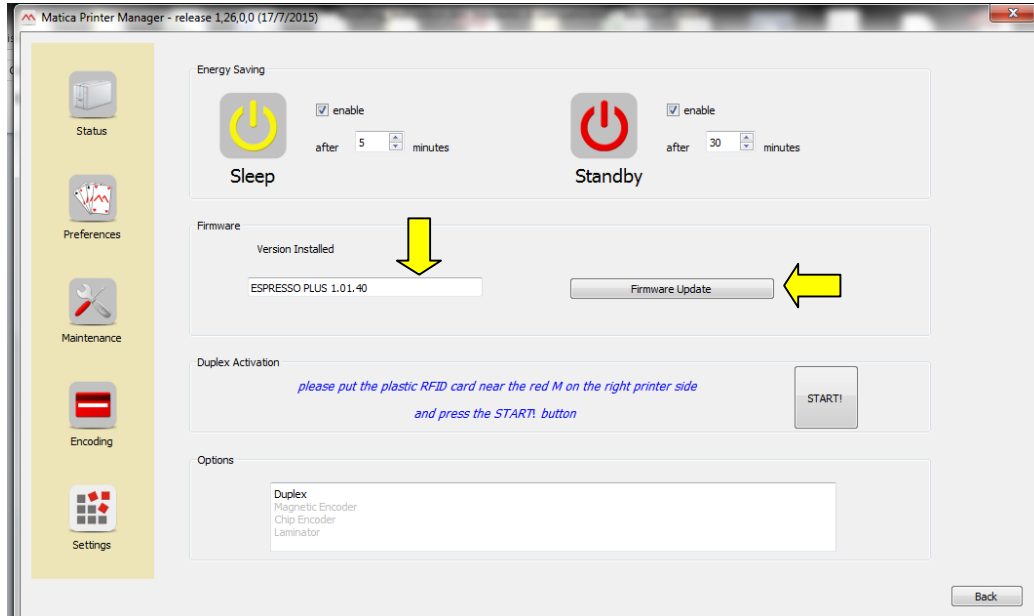
Open the Printer Manger and select SETTINGS from the main page



ESPRESSO and MOCA INSTALLATION and UPDATE INSTRUCTIONS

You can verify the installed FW version, as shown below;

if that is 1.01.22 or previous, it is mandatory to update it before installing the new driver, otherwise the printer will not be visible anymore.

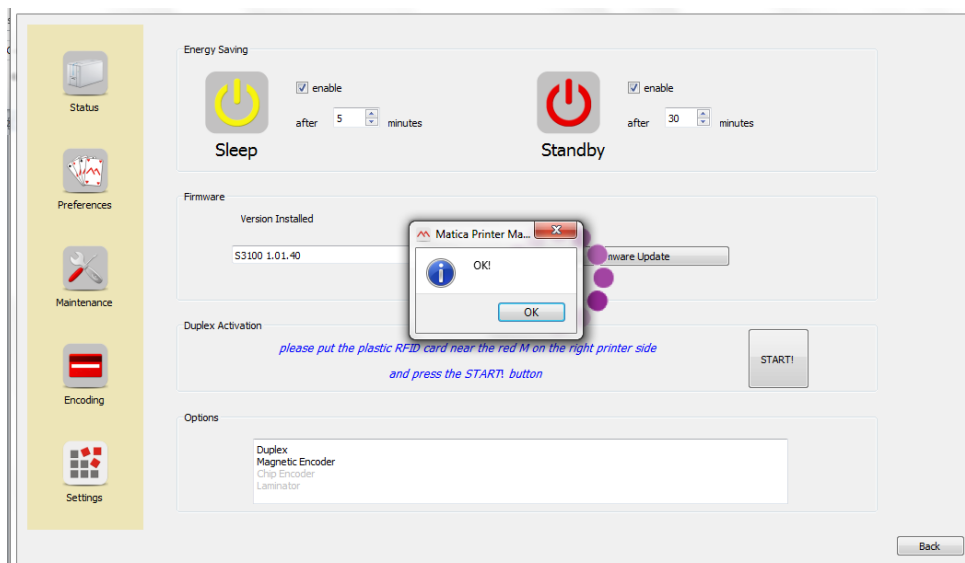


Update the FW touching the “firmware update” button and follow the procedure:

Select the Fw from the folder where you saved it

Pressing OK the update will start: do not close the page or switch off the printer during the download

At the end of the procedure the Printer will be rebooted and then, at the re-start, you will be asked to press Ok to end the update. You can now read the new FW version on the same window you checked before.



ESPRESSO and MOCA INSTALLATION and UPDATE INSTRUCTIONS

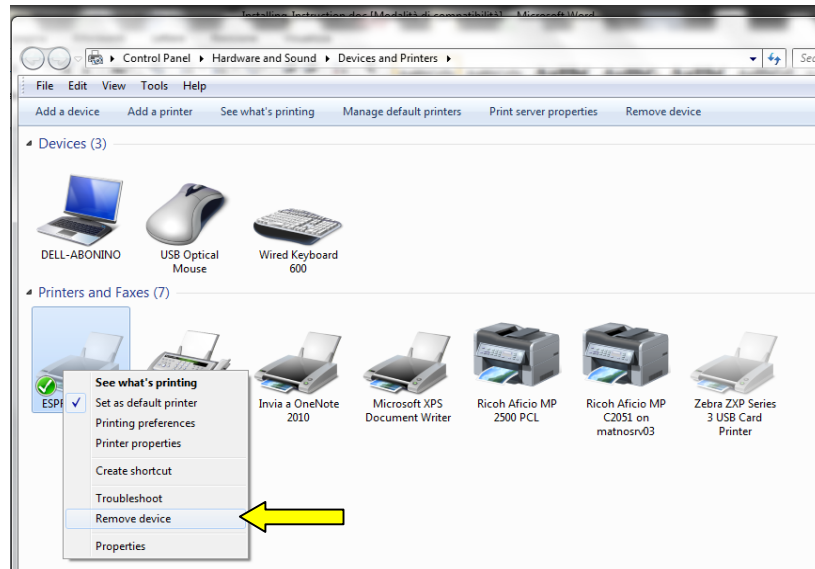
2 - DELETING THE OLD PRINTERS

On the PC follow the path: **Start > Devices and Printers**

Remove all the Moca and Espresso printers:

Go with the mouse on each device, one by one

Open the window using the right mouse key and select **REMOVE DEVICE**

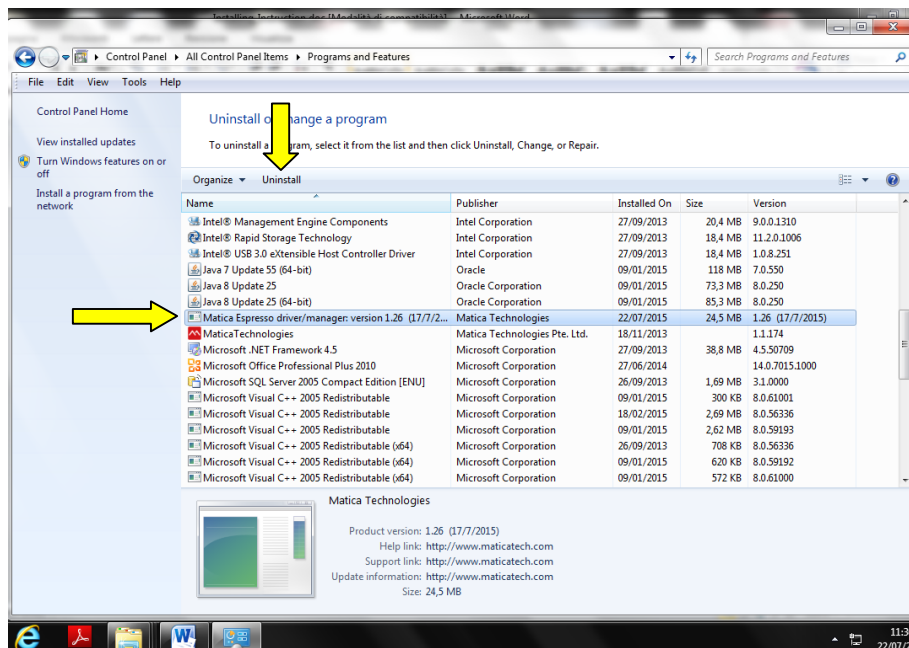


3 - UNINSTALL THE OLD DRIVER

Uninstall the old Driver is MANDATORY before installing a new version

On the PC follow the path: **Start > Control Panel > Programs and Features**

Select Matica “name of the printer” DRIVER and click on **UNINSTALL**. Then **re-boot the PC**



ESPRESSO and MOCA INSTALLATION and UPDATE INSTRUCTIONS

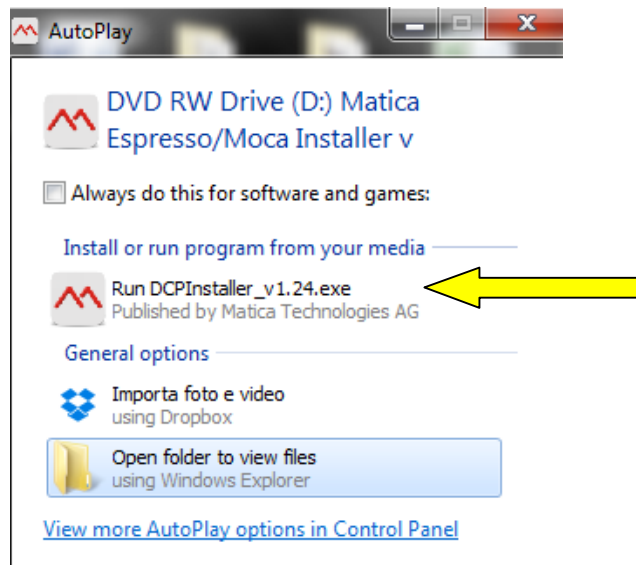
4 - NEW DRIVER INSTALLATION: USB connection

Insert the CD Driver in your PC or

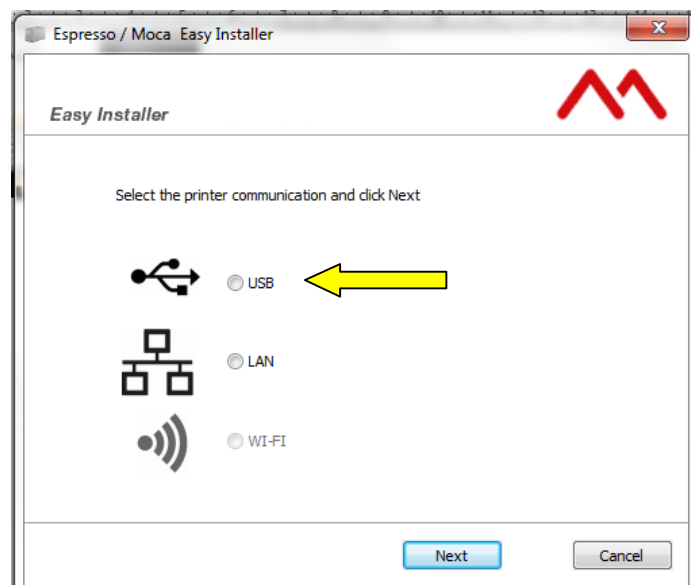
Click on the .EXE file you received as ZIP file (the ZIP file contains both the ISO and EXE extension of the driver file: UNZIP it and save the content on a folder of your PC)

Select **Run DCPInstaller_vers.exe** and then follow CAREFULLY the instructions given by the Easy Installer procedure.

!! BE CAREFUL that your printer is not connected to the PC, you will be asked to connect the USB cable and to switch On the printer at the end of the installation only.



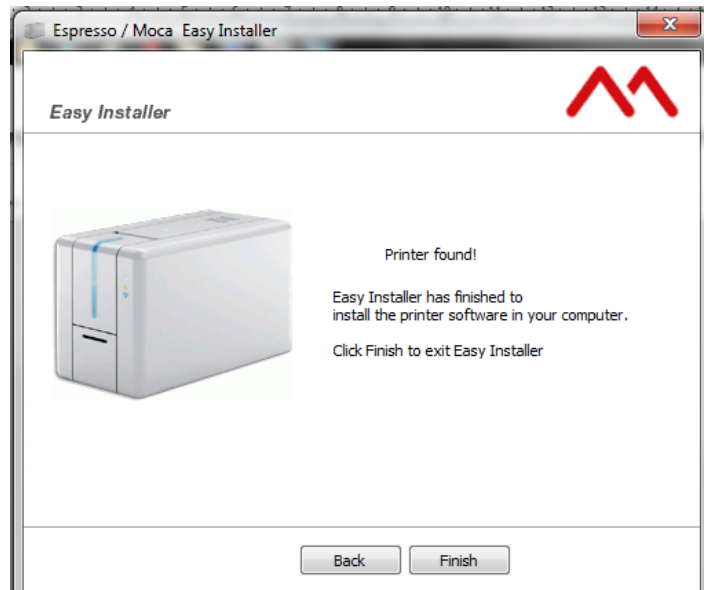
You will be requested to select the connection you are going to use: **select USB** and follow the instructions



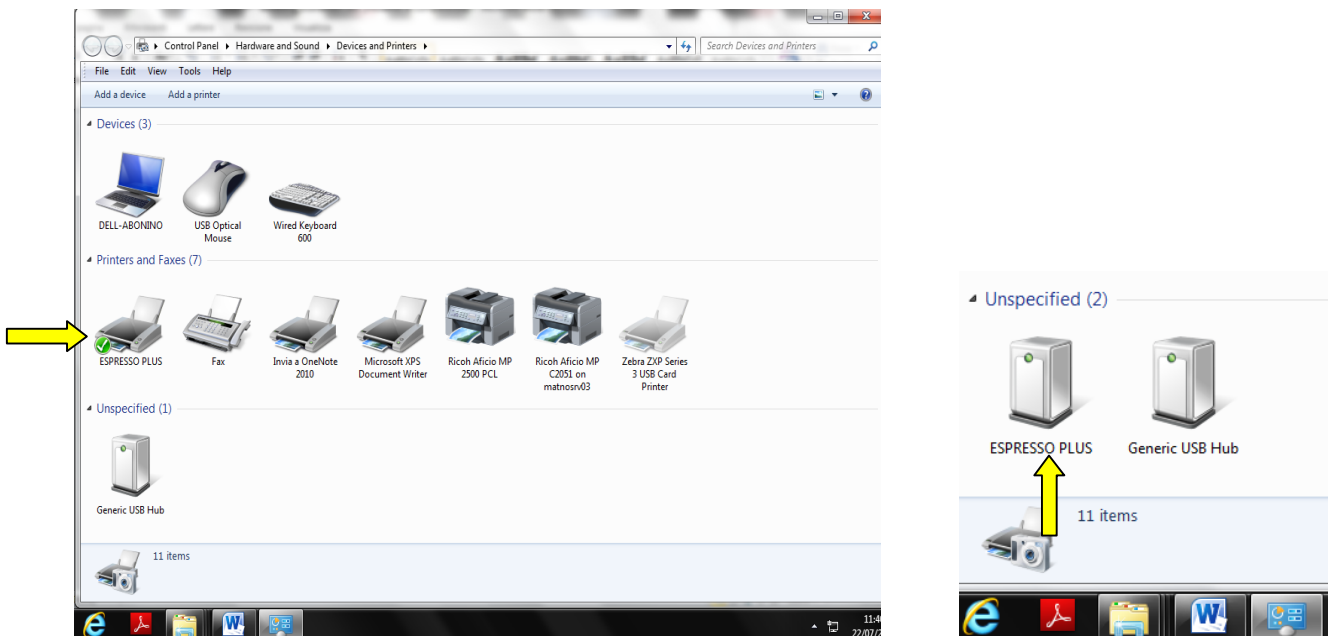
ESPRESSO and MOCA INSTALLATION and UPDATE INSTRUCTIONS

When requested by the Easy Installer procedure, connect the printer via USB cable and power it ON.

The installation will be finished in few seconds.



You can now Open the Printer Folder following the path: **Start > Devices and Printers** and see your printer **successfully installed and ready for use**.



WARNING !!

If the printer is visible as a **BIN** in the Unspecified Devices space, just wait for some MINUTES (about 3) to have the bin transformed in your printer shown on the DEVICES space.

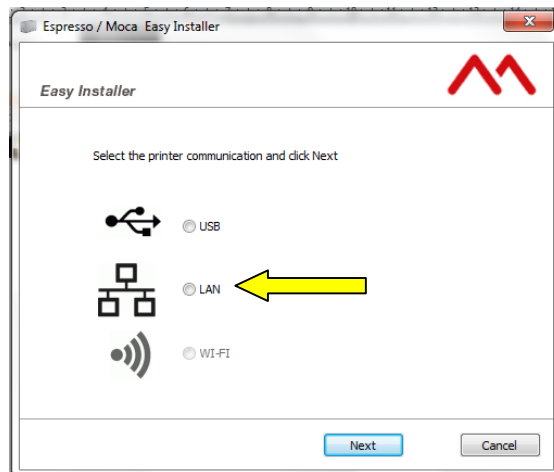
ESPRESSO and MOCA INSTALLATION and UPDATE INSTRUCTIONS

5 – NEW DRIVER INSTALLATION: LAN connection

The initial procedure is the same described for the USB connection: please refer to **Chapter 4**.

!! BE CAREFULL the printer must not be connected to the PC and you need to have both the **USB cable** and the **Ethernet one** to complete the installation

When the Easy Installer proposes to you the types of connections: **select LAN**



When you will be requested, Switch ON the printer

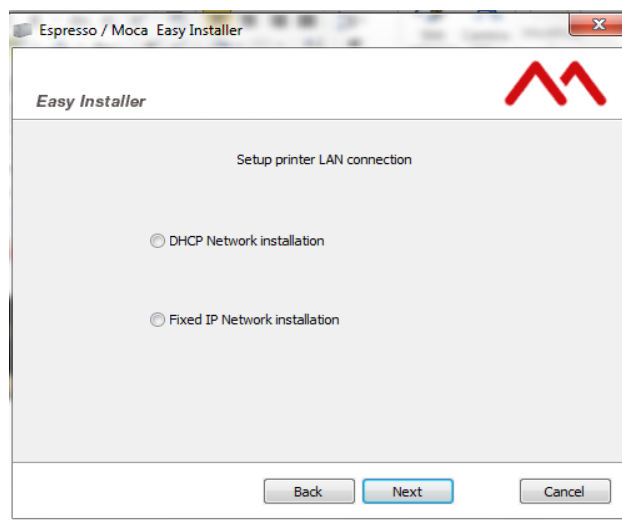
Connect USB cable **LAN cable must not be connected till requested**

The LAN connection offers two different connection possibility: **DHCP or FIXED IP address**:

Select DHCP when the installation of the printer on the network can be silent without any constrictions.

Select FIXED IP when the printer area is into the network architecture

and than follow the instructions given by the Easy Installer



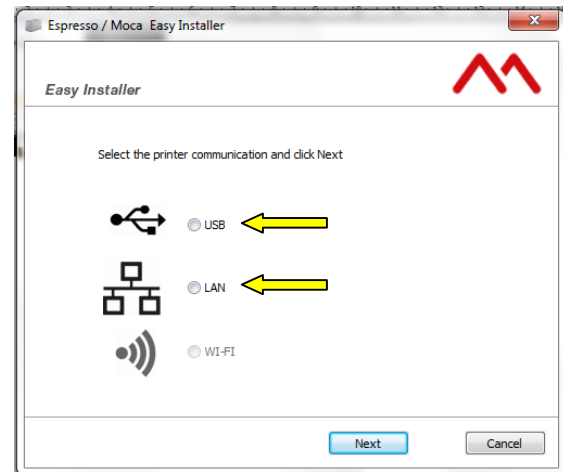
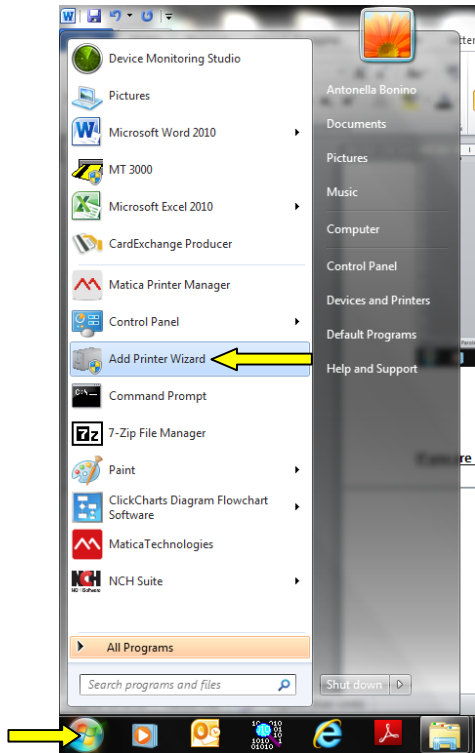
At the end of installation, you can Open the Printer Folder following the path: **Start > Devices and Printers** and see your printer successfully installed and ready for use.

ESPRESSO and MOCA INSTALLATION and UPDATE INSTRUCTIONS

6 – ADD PRINTER WIZARD

If you want to install other printers, after the first installation of the driver, proceed as follows:

Select Start – Add Printer Wizard



You will be requested to select the connection you are going to use: **select USB or LAN** and proceed in the same way already described in the **Chapter 4 or 5**, respectively.